

Sprint Start

- is a process intended to jump start projects in an efficient manner - recognizing that the district's primary mission is to educate children and to optimize their time, avoid duplication of effort, and develop actionable tasks that can be assigned and monitored. It is an orderly framework for classifying and documenting information for effective decision making.

Description of Design Phases:

- **Notice to Proceed** - A written notice from the project from the project owner to the contractor in which the contractor is authorized to proceed with the work on a specified date.
- **Programing** - expands on the information documented in the "Sprint Start" by collecting, analyzing, synthesizing, and documenting all of the requirements for the project. Without a program, architects may deviate from the actual requirements and produce a facility that does not properly address the needs of the District.
- **Schematic Design** - is the preliminary phase of design services to produce a diagrammatic representation of the project, including sketches of building exterior and selected interior spaces, outline-level specification of materials and finishes to be incorporated, general floor plans, and a narrative assessment of proposed building systems.
- **Design Development** - is the continued development of the project design and detailing, refinement, and confirmation of program requirements and schematic design efforts, and the expansion of outline specifications that fully describe the nature and intent of the project.
- **Construction Documents** - begin at the completion of Design Development documents and incorporate and illustrate all aspects of the project in sufficient detail for purposes of bidding/proposing by the construction community throughout the construction process. All construction documents include 100% complete drawings and specifications with the appropriate architect and engineer seals.

2 Methods used in Bidding Process:

- **Competitive Sealed Proposal (CSP)** - Per the Texas Education Code, Competitive Sealed Proposals are procured via a best-value selection procurement process - Request for Proposals (RFP) only. In determining best value, EPISD is not restricted to considering price alone but may consider any other factor stated in the selection criteria. EPISD shall first attempt to negotiate with the selected offeror a contract. EPISD and its architect may discuss with the selected offeror options for a scope or time modification and any price change associated with the modification. If EPISD is unable to reach a contract with the selected offeror, EPISD shall, formally and in writing, end negotiations with that offeror and proceed to the next offeror in the order of the selection ranking until a contract is reached or all proposals are rejected.
- **Construction Manager at Risk (CMAR)** - Per Texas Education Code, Construction Manager-at-Risk project delivery must be via a qualifications-based, best-value selection, but may be accomplished via a one-step (RFP only) or two-step procurement process (RFQ followed by a RFP). EPISD will be using a two-step process. In this process fees or prices may not be requested in step one Request for Qualifications (RFQ). Per Texas Education Code, if a satisfactory contract cannot be negotiated with the selected offeror, negotiations "shall, formally and in writing, end" with that offeror and EPISD should "proceed to negotiate with the next offeror in the order of the selection ranking until a contract is signed."

Miscellaneous

- **Change Order** - is a component of the change management process in which changes in the scope of work agreed to by the client, contractor and architect implemented.
- **Reimbursable** - are costs and charges incurred by the Architect for a variety of items for which the Architect must pay, directly attributable to a project.

Understanding the Monthly Report

Schedule Phase Description:

Not Started- No design or construction activities have begun.

Pre-Design- Activities in preparation for Design Work.

Design- Programming and Design through Construction Documents.

Bidding and Negotiations- Includes bidding, award and negotiation process with the contractor for construction work.

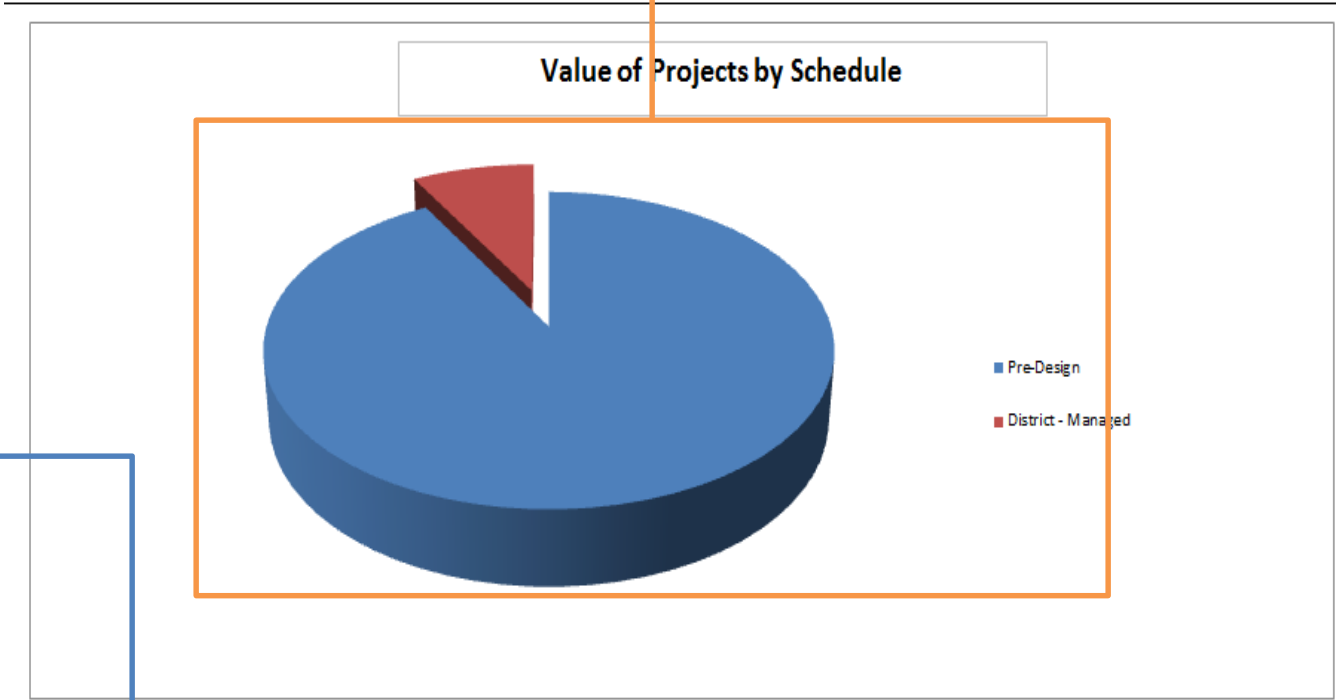
Construction- Construction work in progress.

Move In- Occupancy is permitted though minor activities or corrections continue. This phase includes project closeout.

District Managed- Includes District wide managed work non-assigned to a specific location (transportation, technology, land, bond support, unidentified classroom additions, etc.).

Completed - All work on project complete.

Graphical representation of the Total Project Budgets grouped by Phase.



Description	BUDGET			COST COMMITMENTS			EXPENDITURES		
	A	B	C=A+B	D	E	G=D+E	H=C-G	I	J=I/C
	Original Project Budget	Budget Changes	Current Budget	Commitments	Additional Commitments To Complete	Projected Commitments	Projected (Over) / Under	Cost To Date	% Expended
Pre-Design	\$646,613,873	\$35,804,991	\$646,613,873	\$0	\$646,613,873	\$646,613,873	\$0	\$0	\$0
District-Managed	\$57,886,695	\$0	\$57,886,695	\$0	\$57,886,695	\$57,886,695			
Grand Totals:	\$668,695,577	\$35,804,991	\$704,500,568	\$0	\$704,500,568	\$704,500,568	\$0	\$0	\$0

Understanding the Monthly Report

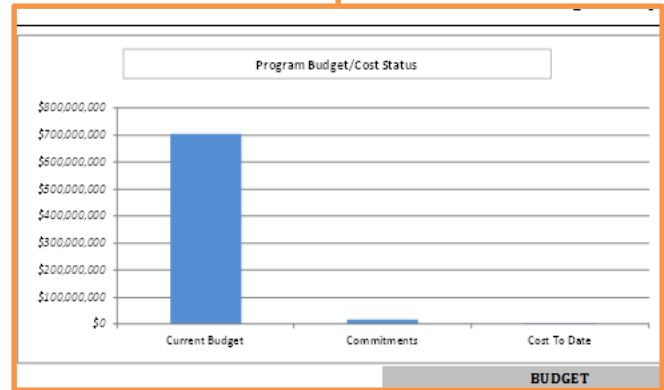
Column Headings:

- Original Budget-** Original budget approved for the 2016 Bond Program.
- Budget Changes-** Budget adjustments approved by EPISD.
- Current Budget-** Current approved project budget through the report period.
- Commitments-** Sum of all original purchase orders/contracts and changes to purchase orders/contracts through the report period.
- Forecasted Additional Commitments--** Commitments and/or changes pending approval and Future costs anticipated on the project through the report period.

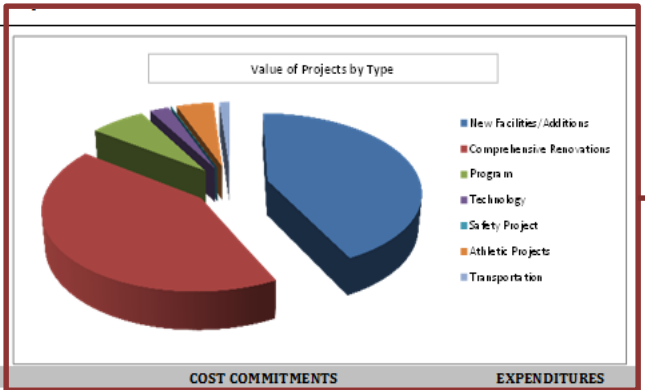
- Total Projected Commitments-** Original commitments plus approved changes plus pending commitments plus estimate to complete. It represents total cost estimated at completion.
- Projected Over/Under-** Current budget minus the projected commitments. It represents savings (+) or overruns (-) in the project.

- Cost to Date-** Sum of all invoices entered through the report period.
- % Expended-** Cost to date divided by current budget. It represents the percent of expenditures per line reported.

Graphical representation of the Budget /costs status for the overall Program



Graphical representation of the Value of Projects By Type



Description	A	B	C=A+B	D	E	G=D+E	H=C-G	I	J=I/C
	Original Project Budget	Budget Changes	Current Budget	Commitments	Forecasted Additional Commitments	Total Projected Commitments	Projected (Over) / Under	Cost To Date	% Expended
New Facilities/Additions									
Bradley Elementary consolidating Fannin Elementary	\$19,179,637	\$0	\$19,179,637	\$0	\$19,179,637	\$19,179,637	\$0	\$0	0.00%
Dowell Elementary consolidating Schuster and Greer Elementaries	\$28,300,994	\$0	\$28,300,994	\$0	\$28,300,994	\$28,300,994	\$0	\$0	0.00%
Henderson Middle consolidating Clardy Elementary	\$39,118,352	\$0	\$39,118,352	\$0	\$39,118,352	\$39,118,352	\$0	\$0	0.00%
Hughes / Ross combined PK-8	\$48,670,314	\$0	\$48,670,314	\$0	\$48,670,314	\$48,670,314	\$0	\$0	0.00%
Lincoln Middle consolidating Roberts and Bond Elementaries	\$44,179,303	\$0	\$44,179,303	\$0	\$44,179,303	\$44,179,303	\$0	\$0	0.00%
MacArthur K-8 consolidating Bonham Middle	\$18,360,458	\$0	\$18,360,458	\$0	\$18,360,458	\$18,360,458	\$0	\$0	0.00%
Morehead Middle consolidating Johnson Elementary	\$35,145,245	\$0	\$35,145,245	\$0	\$35,145,245	\$35,145,245	\$0	\$0	0.00%
New Northeast Middle School (Replacing Bassett)	\$31,990,176	\$0	\$31,990,176	\$0	\$31,990,176	\$31,990,176	\$0	\$0	0.00%
Terrace Hills Middle consolidating Collins Elementary	\$35,374,762	\$0	\$35,374,762	\$0	\$35,374,762	\$35,374,762	\$0	\$0	0.00%
New Facilities/Additions	\$300,319,229	\$0	\$300,319,229	\$0	\$300,319,229	\$300,319,229	\$0	\$0	0.00%
Comprehensive Renovations									
Andrews High School	\$21,531,592	\$9,700,061	\$31,231,593	\$149,134	\$31,082,459	\$31,231,593	\$0	\$149,134	0.48%
Austin High School	\$29,638,291	\$0	\$29,638,291	\$0	\$29,638,291	\$29,638,291	\$0	\$0	0.00%
Burgess High School	\$52,457,349	\$0	\$52,457,349	\$0	\$52,457,349	\$52,457,349	\$0	\$0	0.00%
Coronado High School	\$68,257,215	\$0	\$68,257,215	\$0	\$68,257,215	\$68,257,215	\$0	\$0	0.00%
El Paso High School	\$19,478,383	\$0	\$19,478,383	\$0	\$19,478,383	\$19,478,383	\$0	\$0	0.00%
Irvin High School	\$25,727,765	\$24,314,680	\$50,042,445	\$193,500	\$49,848,945	\$50,042,445	\$0	\$193,500	0.39%
Jefferson/Silva High School	\$36,612,589	\$0	\$36,612,589	\$0	\$36,612,589	\$36,612,589	\$0	\$0	0.00%
Crockett Elementary School	\$11,101,143	\$0	\$11,101,143	\$0	\$11,101,143	\$11,101,143	\$0	\$0	0.00%
Comprehensive Renovations	\$264,804,267	\$34,014,741	\$298,819,008	\$342,634	\$298,476,374	\$298,819,008	\$0	\$342,634	0.11%
Program									
Program Contingency	\$31,775,636	\$0	\$31,775,636	\$0	\$31,775,636	\$31,775,636	\$0	\$0	0.00%
Program Manager	\$15,700,000	\$0	\$15,700,000	\$15,700,000	\$0	\$15,700,000	\$0	\$982,514	6.26%
Program	\$47,475,636	\$0	\$47,475,636	\$15,700,000	\$31,775,636	\$47,475,636	\$0	\$982,514	2.07%

Understanding the Monthly Report

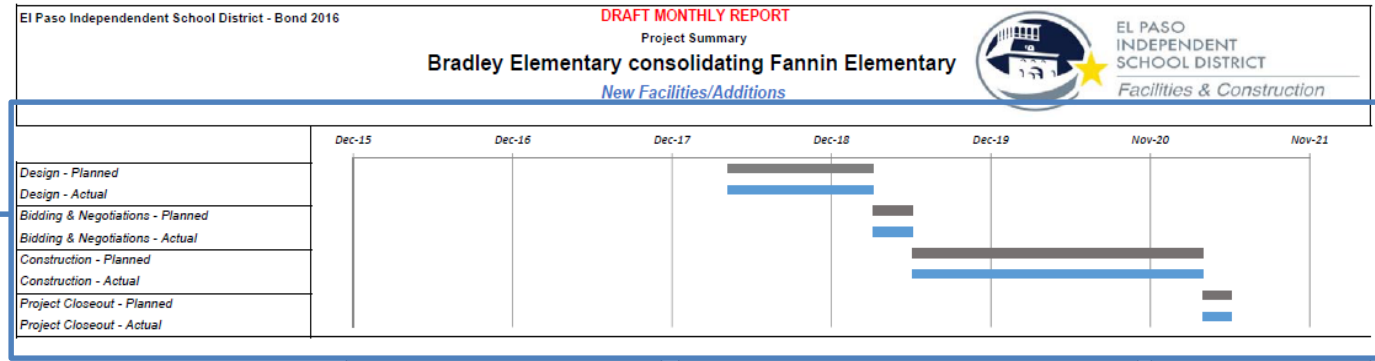
Activity Description:

Design- Duration from Programming through Construction Documents.

Bidding and Negotiations- Duration of procurement activities through negotiations with the contractor for construction work.

Construction- Duration for Construction

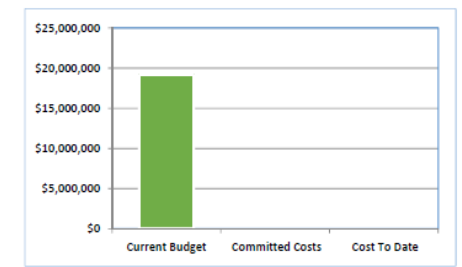
Project Closeout- Duration for Project Closeout



Description	BUDGET			COST COMMITMENTS			COST		
	A	B	C = (A+B)	D	E	G=D+E	H=C-G	I	J=I/C
Design & Other Consultants	\$1,540,423	\$0	\$1,540,423	\$0	\$1,540,423	\$1,540,423	\$0	\$0	0.00%
Construction	\$15,361,981	\$0	\$15,361,981	\$0	\$15,361,981	\$15,361,981	\$0	\$0	0.00%
Equipment	\$1,536,198	\$0	\$1,536,198	\$0	\$1,536,198	\$1,536,198	\$0	\$0	0.00%
Miscellaneous	\$741,035	\$0	\$741,035	\$0	\$741,035	\$741,035	\$0	\$0	0.00%
Totals:	\$19,179,637	\$0	\$19,179,637	\$0	\$19,179,637	\$19,179,637	\$0	\$0	0.00%

Comments:

- New Combined Campus will have capacity for 1,000 Students
- Bradley Elementary will undergo extensive renovations to 21st Century Learning Environments
- New Classroom and Admin Buildings will be constructed to accommodate student population



Bradley Elementary consolidating Fannin Elementary

Status Date 3/31/2017

Understanding the Monthly Report



Cost Description:

Design & Other Consultants - A/E
Design Fees, A/E Design Reimbursable, Design Contingency, Surveying, Geotechnical, Material Testing & Inspection, Commissioning, TAB (Test and Balancing), Consulting Other

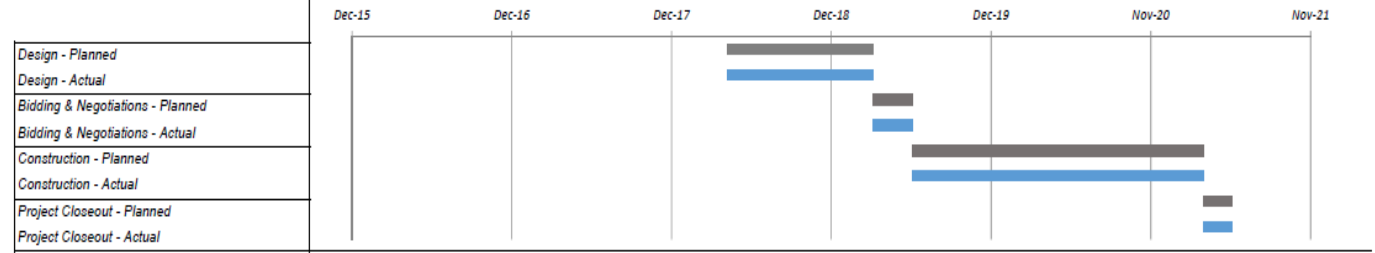
Construction-
Facility Construction costs and other as sociated costs such as Allowances and Construction Contingency.

Equipment- Costs for technology cabling & technology equipment as well as furniture, fixtures and equipment.

Miscellaneous- Project Contingency, Haz-mat Consulting Services and Abatement, Permitting Costs, Temporary Buildings, and other Miscellaneous Fees.

El Paso Independent School District - Bond 2016 DRAFT MONTHLY REPORT

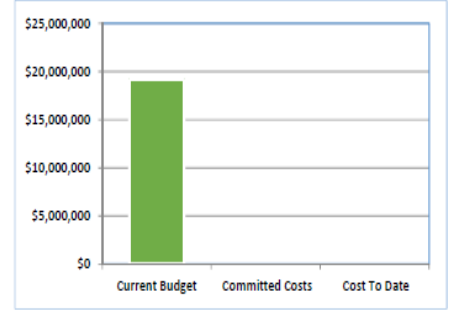
Project Summary
Bradley Elementary consolidating Fannin Elementary
New Facilities/Additions



Description	BUDGET			COST COMMITMENTS			COST		
	A	B	C = (A+B)	D	E	G=D+E	H=C-G	I	J=I/C
Description	Original Budget	Budget Changes	Current Budget	Commitments	Forecasted Additional Commitments	Total Projected Commitments	Projected Over/Under	Cost To Date	% Expended
Design & Other Consultants	\$1,540,423	\$0	\$1,540,423	\$0	\$1,540,423	\$1,540,423	\$0	\$0	0.00%
Construction	\$15,361,981	\$0	\$15,361,981	\$0	\$15,361,981	\$15,361,981	\$0	\$0	0.00%
Equipment	\$1,536,198	\$0	\$1,536,198	\$0	\$1,536,198	\$1,536,198	\$0	\$0	0.00%
Miscellaneous	\$741,035	\$0	\$741,035	\$0	\$741,035	\$741,035	\$0	\$0	0.00%
Totals:	\$19,179,637	\$0	\$19,179,637	\$0	\$19,179,637	\$19,179,637	\$0	\$0	0.00%

Comments:

- New Combined Campus will have capacity for 1,000 Students
- Bradley Elementary will undergo extensive renovations to 21st Century Learning Environments
- New Classroom and Admin Buildings will be constructed to accommodate student population



Bradley Elementary consolidating Fannin Elementary

Status Date 3/31/2017