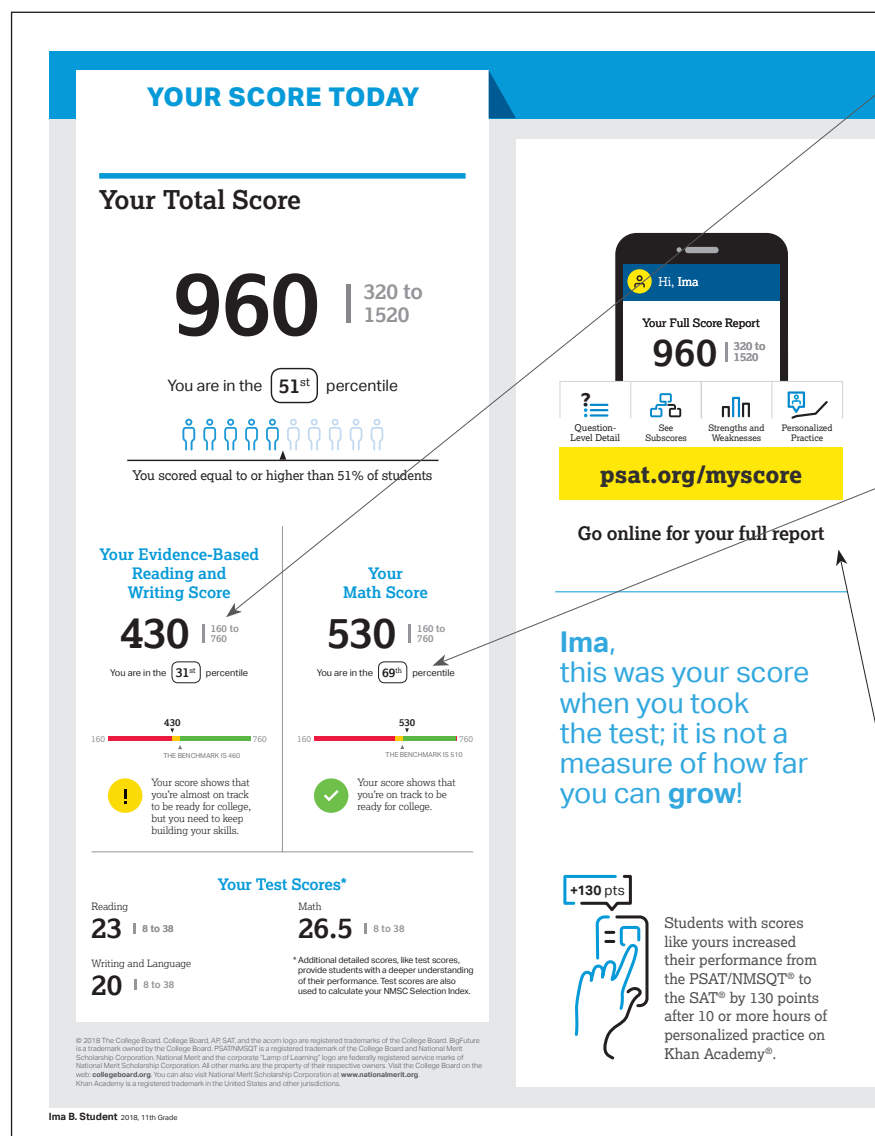


# The PSAT/NMSQT Score Report

## A Case Study: Ima B. Student's PSAT/NMSQT Score Report

Take a look at Ima B. Student's sample score report below and on the next page. Use the corresponding information to help you interpret your student's PSAT/NMSQT Score Report.



### What are Ima's scores?

Ima's Evidence-Based Reading and Writing score is 430, and her Math score is 530. In Evidence-Based Reading and Writing, Ima's score is approaching the benchmark, but she is not quite on track for college readiness. In Math, however, Ima is exceeding the benchmark and is on track. Test scores, cross-test scores, and subscores can give Ima a better understanding of areas to work on.

### What are Ima's score percentiles?

Since Ima is in the 11th grade, the percentiles compare her scores with those of all 11th graders in the nation. Ima scored as well as or better in Evidence-Based Reading and Writing than 31% of a nationally representative group of juniors. In Math, she scored as well as or better than 69% of a nationally representative group of juniors. Additional percentiles are available in Ima's online score report.

### How can Ima see her full report?

Ima can visit [psat.org/myscore](https://psat.org/myscore) to see her full score report, learn how to prepare for the SAT, and see her potential for AP® coursework.

Score Report

**YOUR PATH TOMORROW**

**Here's what else is waiting for you online:**

- A link to free personalized practice on Khan Academy**  
Share your scores with Khan Academy to get your personalized practice.
- A list of the challenging courses you're ready for**  
Congrats! Your scores show you're ready to succeed in AP® courses.
- Your customized starter college list**  
Check out the tools at BigFuture™ to kick-start your college plans.

**Don't forget!**  
Register to take the SAT ahead of college application deadlines in spring of junior year and fall of senior year.

**NATIONAL MERIT SCHOLARSHIP CORPORATION**

**Your NMSC Selection Index**  
**139**

NMSC uses a Selection Index score based on PSAT/NMSQT scores as an initial screen of students who enter its scholarship programs. The Selection Index score is double the sum of your Reading, Writing and Language, and Math Test scores.

**Eligibility Information**  
You meet entry requirements for the 2020 National Merit Scholarship Program and your Selection Index score will be considered among 1.6 million program entrants.

**Entry Requirements**  
Information you provided on your answer sheet:  
High school student: **YES**  
Year to complete high school and enroll full time in college: **2020**  
Total years to be spent in grades 9–12: **4**

**National Merit Scholarship Corporation**  
National Merit Scholarship Corporation (NMSC) conducts the National Merit® Scholarship Program, an academic competition for recognition and college scholarships.  
To designate students who qualify for recognition in its 2020 competition, NMSC will consider the 2018 PSAT/NMSQT® Selection Index scores of some 1.6 million test takers (usually high school juniors) who meet program entry requirements. For more information, please visit: [www.nationalmerit.org](http://www.nationalmerit.org)

If any of your responses to NMSC's "Entry Requirements" questions are inaccurate or there has been a change in plans that may affect program entry, write immediately to:  
**National Merit Scholarship Corporation**  
Attn: Scholarship Administration  
1550 Sherman Avenue, Suite 200  
Evanston, IL 60201-4897

Include your name and home address along with your high school name, address, and six-digit code number.

Ima B. Student 2018, 11th Grade

Score Report

### What are Ima's next steps?

When Ima accesses her full score report at [psat.org/myscore](http://psat.org/myscore), she'll also be able to connect to free, personalized practice on Khan Academy, see her potential for AP coursework, and use the college- and career-planning resources at BigFuture™.

### Will Ima be able to enter the National Merit Scholarship Program?

Ima has an NMSC Selection Index score of 139, which is double the sum of her Reading Test (23), Writing and Language Test (20), and Math Test (26.5) scores. This Selection Index score is used by National Merit Scholarship Corporation to designate students to be recognized in its National Merit Scholarship Program.

If an asterisk had appeared next to Ima's score, it would mean she did not meet entry requirements for the program or her score was provided for guidance purposes only and would not be considered in the National Merit Scholarship Program. In this case, Ima meets entry requirements and will be recognized if her score places her among the 50,000 high scorers. For entry requirements and information on the steps in the competition, see the 2018 *PSAT/NMSQT Student Guide* or visit [www.nationalmerit.org](http://www.nationalmerit.org).

### When should Ima take the SAT?

As a junior, Ima should begin planning when she will take the SAT. Most students take the SAT for the first time in their junior year. By planning now, Ima can ensure she has adequate time to practice for the SAT. She can take advantage of practice resources by visiting [psat.org/myscore](http://psat.org/myscore).

### How can Ima learn from her answers?

Using her score report with her PSAT/NMSQT test booklet, Ima can see the actual questions, correct answers, and difficulty level alongside her own answers. She can use her online score report to review the questions she answered incorrectly or omitted, and to see detailed answer explanations.

**NOTE:** For students at schools participating in the test administration study or research group or testing on Saturday, October 13, the actual questions, answers, and answer explanations won't be provided, and the score report won't include the correct answer column.

**Your Question-Level Feedback**

**QUESTIONS OVERVIEW**

<b>READING</b>	47 Total Questions 21 Correct Answers 25 Incorrect Answers	<b>WRITING AND LANGUAGE</b>	44 Total Questions 17 Correct Answers 26 Incorrect Answers	<b>MATH - CALCULATOR</b>	31 Total Questions 15 Correct Answers 14 Incorrect Answers	<b>MATH - NO CALCULATOR</b>	17 Total Questions 10 Correct Answers 7 Incorrect Answers
----------------	--	-----------------------------	--	--------------------------	--	-----------------------------	---

**KEY**  
 ✓ Correct  
 ○ Omitted  
 U Unscorable  
 X Multi-Grid/Incorrect  
 ■ Easy Question  
 ■ Medium Question  
 ■ Hard Question  
 ■ Easy Question Missed\*

**READING**

Questions #	Correct	Your Answer	Difficulty
1	A	✓	■
2	B	✓	■
3	B	✓	■
4	B	✓	■
5	C	✓	■
6	D	✓	■
7	B	✓	■
8	A	✓	■
9	D	✓	■
10	A	✓	■
11	D	✓	■
12	D	✓	■
13	A	✓	■
14	A	✓	■
15	C	✓	■
16	B	✓	■
17	D	✓	■
18	B	✓	■
19	A	✓	■
20	C	✓	■
21	B	✓	■
22	D	✓	■
23	B	✓	■
24	D	✓	■
25	C	✓	■
26	B	✓	■
27	B	✓	■
28	A	✓	■
29	A	✓	■
30	B	✓	■
31	D	✓	■
32	A	✓	■
33	C	✓	■
34	A	✓	■
35	A	✓	■
36	C	✓	■
37	B	✓	■
38	C	✓	■
39	C	✓	■
40	C	✓	■
41	B	✓	■
42	B	✓	■
43	A	✓	■
44	A	✓	■
45	A	✓	■
46	D	✓	■
47	C	✓	■

**WRITING AND LANGUAGE**

Questions #	Correct	Your Answer	Difficulty
1	D	✓	■
2	B	✓	■
3	C	✓	■
4	C	✓	■
5	B	✓	■
6	B	✓	■
7	A	✓	■
8	B	✓	■
9	A	✓	■
10	D	✓	■
11	D	✓	■
12	B	✓	■
13	C	✓	■
14	C	✓	■
15	D	✓	■
16	B	✓	■
17	B	✓	■
18	A	✓	■
19	B	✓	■
20	C	✓	■
21	A	✓	■
22	A	✓	■
23	C	✓	■
24	D	✓	■
25	C	✓	■
26	A	✓	■
27	A	✓	■
28	B	✓	■
29	D	✓	■
30	C	✓	■
31	D	✓	■
32	B	✓	■
33	D	✓	■
34	D	✓	■
35	D	✓	■
36	B	✓	■
37	C	✓	■
38	A	✓	■
39	C	✓	■
40	D	✓	■
41	D	✓	■
42	A	✓	■
43	C	✓	■
44	B	✓	■

**MATH - CALCULATOR**

Questions #	Correct	Your Answer	Difficulty
1	B	✓	■
2	A	✓	■
3	B	✓	■
4	D	✓	■
5	B	✓	■
6	A	✓	■
7	B	✓	■
8	C	✓	■
9	A	✓	■
10	D	✓	■
11	D	✓	■
12	A	✓	■
13	B	✓	■
14	C	✓	■

**MATH - NO CALCULATOR**

Questions #	Correct	Your Answer	Difficulty
1	D	✓	■
2	A	✓	■
3	B	✓	■
4	C	✓	■
5	C	✓	■
6	B	✓	■
7	A	✓	■

\*Tip: A great way to start improving, check out the easy questions you missed first.

Ima B. Student 2018, 11th Grade

960 | 1234567890

[psat.org/myscore](http://psat.org/myscore)

Go on line for your full report

Question-Level Detail | See Subscores

Strengths and Weaknesses | Personalized Practice

Score Report

## The PSAT/NMSQT Sample Score Report

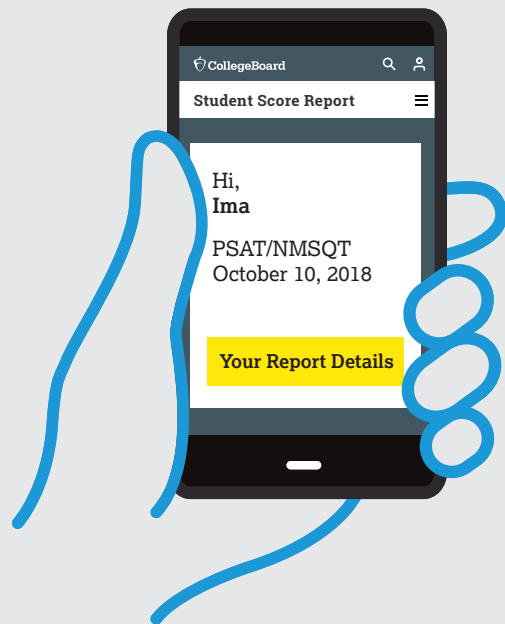
# PSAT/NMSQT<sup>®</sup>

Preliminary SAT/National Merit Scholarship Qualifying Test

PSAT/NMSQT<sup>®</sup>

CollegeBoard / NATIONAL MERIT SCHOLARSHIP CORPORATION

# Your Summary Score Report



Get Your Full  
Score Report Online

[psat.org/myscore](https://psat.org/myscore)

Hi, Ima B. Student

School Name: **John F. Kennedy High School**

School Code: **123456**

Grade: **11th Grade**

Student ID: **24068907**

Optional Code: **00**

Access Code: **A02670146P**

College Board ID: **12345678**

# The PSAT/NMSQT Sample Score Report (continued)

## YOUR SCORE TODAY

### Your Total Score

**960** | 320 to 1520

You are in the **51<sup>st</sup>** percentile

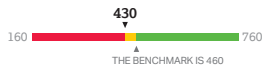


You scored equal to or higher than 51% of students

### Your Evidence-Based Reading and Writing Score

**430** | 160 to 760

You are in the **31<sup>st</sup>** percentile

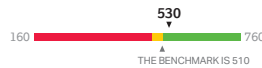


**!** Your score shows that you're almost on track to be ready for college, but you need to keep building your skills.

### Your Math Score

**530** | 160 to 760

You are in the **69<sup>th</sup>** percentile



**✓** Your score shows that you're on track to be ready for college.

### Your Test Scores\*

Reading  
**23** | 8 to 38

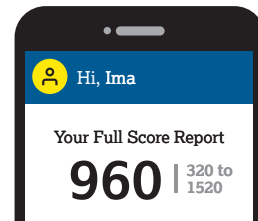
Writing and Language  
**20** | 8 to 38

Math  
**26.5** | 8 to 38

\* Additional detailed scores, like test scores, provide students with a deeper understanding of their performance. Test scores are also used to calculate your NMSC Selection Index.

© 2018 The College Board. College Board, AP, SAT, and the acorn logo are registered trademarks of the College Board. BigFuture is a trademark owned by the College Board. PSAT/NMSQT is a registered trademark of the College Board and National Merit Scholarship Corporation. National Merit and the corporate "Lamp of Learning" logo are federally registered service marks of National Merit Scholarship Corporation. All other marks are the property of their respective owners. Visit the College Board on the web: [collegeboard.org](http://collegeboard.org). You can also visit National Merit Scholarship Corporation at [www.nationalmerit.org](http://www.nationalmerit.org). Khan Academy is a registered trademark in the United States and other jurisdictions.

Ima B. Student 2018, 11th Grade



?

Question-Level Detail    See Subscores    Strengths and Weaknesses    Personalized Practice

**[psat.org/myscore](http://psat.org/myscore)**

Go online for your full report

Ima,  
this was your score when you took the test; it is not a measure of how far you can **grow!**



Students with scores like yours increased their performance from the PSAT/NMSQT® to the SAT® by 130 points after 10 or more hours of personalized practice on Khan Academy®.

# The PSAT/NMSQT Sample Score Report (continued)

## YOUR PATH TOMORROW

### Here's what else is waiting for you online:

1

#### A link to free personalized practice on Khan Academy

Share your scores with Khan Academy to get your personalized practice.

2

#### A list of the challenging courses you're ready for

Congrats! Your scores show you're ready to succeed in AP® courses.

3

#### Your customized starter college list

Check out the tools at BigFuture™ to kick-start your college plans.

SAT

#### Don't forget!

Register to take the SAT ahead of college application deadlines in spring of junior year and fall of senior year.

 NATIONAL MERIT  
SCHOLARSHIP CORPORATION

#### Your NMSC Selection Index

**139**

NMSC uses a Selection Index score based on PSAT/NMSQT scores as an initial screen of students who enter its scholarship programs. The Selection Index score is double the sum of your Reading, Writing and Language, and Math Test scores.

#### Eligibility Information

You meet entry requirements for the 2020 National Merit Scholarship Program and your Selection Index score will be considered among 1.6 million program entrants.

If your Selection Index places you among the 50,000 high scorers who qualify for National Merit Scholarship Program recognition, you will be notified next September when qualifying Selection Index scores will be made available.

#### Entry Requirements

Information you provided on your answer sheet:

High school student: **YES**

Year to complete high school and enroll full time in college: **2020**

Total years to be spent in grades 9–12: **4**

#### National Merit Scholarship Corporation

National Merit Scholarship Corporation (NMSC) conducts the National Merit® Scholarship Program, an academic competition for recognition and college scholarships.

To designate students who qualify for recognition in its 2020 competition, NMSC will consider the 2018 PSAT/NMSQT® Selection Index scores of some 1.6 million test takers (usually high school juniors) who meet program entry requirements. For more information, please visit: [www.nationalmerit.org](http://www.nationalmerit.org).

If any of your responses to NMSC's "Entry Requirements" questions are inaccurate or there has been a change in plans that may affect program entry, write immediately to:

**National Merit Scholarship Corporation**  
**Attn: Scholarship Administration**  
**1560 Sherman Avenue, Suite 200**  
**Evanston, IL 60201-4897**

Include your name and home address along with your high school name, address, and six-digit code number.

# The PSAT/NMSQT Sample Score Report (continued)\*

## Your Question-Level Feedback

### QUESTIONS OVERVIEW

#### READING

**47**  
Total Questions

**21**  
Correct Answers

**25**  
Incorrect Answers

**1**  
Omitted Answers

#### WRITING AND LANGUAGE

**44**  
Total Questions

**17**  
Correct Answers

**26**  
Incorrect Answers

**1**  
Omitted Answers

#### MATH – CALCULATOR

**31**  
Total Questions

**15**  
Correct Answers

**14**  
Incorrect Answers

**2**  
Omitted Answers

#### MATH – NO CALCULATOR

**17**  
Total Questions

**10**  
Correct Answers

**7**  
Incorrect Answers

**0**  
Omitted Answers

**\*Tip:** A great way to start improving: check out the easy questions you missed first.

#### KEY

- ✓ Correct
- Omitted
- U Unscorable
- X Multi-Grid/Incorrect
- Easy Question
- Medium Question
- Hard Question
- Easy Question Missed\*

#### READING

Question #	Correct	Your Answer	Difficulty
1	A	✓	■
2	B	A	■
3	B	✓	■
4	B	A	■
5	C	✓	■
6	D	✓	■
7	B	✓	■
8	A	✓	■
9	D	✓	■
10	A	✓	■
11	D	C	■
12	D	B	■
13	D	A	■
14	A	X	■
15	C	B	■
16	B	C	■
17	D	C	■
18	B	D	■
19	A	✓	■
20	C	✓	■
21	B	D	■
22	D	✓	■
23	B	D	■
24	D	✓	■
25	C	✓	■
26	B	A	■
27	B	C	■
28	A	C	■
29	D	A	■
30	B	A	■
31	D	✓	■
32	A	✓	■
33	C	✓	■
34	A	B	■
35	A	B	■
36	C	○	■
37	B	C	■
38	C	D	■
39	C	✓	■
40	C	✓	■
41	B	✓	■
42	B	✓	■
43	A	B	■
44	A	✓	■
45	A	C	■
46	D	A	■
47	C	B	■

#### WRITING AND LANGUAGE

Question #	Correct	Your Answer	Difficulty
1	D	C	■
2	B	✓	■
3	C	D	■
4	C	A	■
5	B	D	■
6	B	X	■
7	A	D	■
8	B	C	■
9	A	B	■
10	D	✓	■
11	D	✓	■
12	B	✓	■
13	C	✓	■
14	C	B	■
15	D	✓	■
16	B	A	■
17	B	D	■
18	A	✓	■
19	B	✓	■
20	C	D	■
21	A	✓	■
22	A	B	■
23	C	B	■
24	D	C	■
25	C	D	■
26	A	✓	■
27	A	D	■
28	B	✓	■
29	D	A	■
30	C	B	■
31	D	✓	■
32	B	✓	■
33	D	✓	■
34	D	B	■
35	D	✓	■
36	B	A	■
37	C	D	■
38	A	✓	■
39	C	✓	■
40	D	A	■
41	D	B	■
42	A	○	■
43	C	B	■
44	B	C	■

#### MATH – CALCULATOR

Question #	Correct	Your Answer	Difficulty
1	B	✓	■
2	A	✓	■
3	B	✓	■
4	D	✓	■
5	B	C	■
6	A	✓	■
7	B	✓	■
8	C	B	■
9	A	✓	■
10	D	C	■
11	D	✓	■
12	A	✓	■
13	B	✓	■
14	C	✓	■

Question #	Correct	Your Answer	Difficulty
28	65	60	■
29	0, 12	2	■
30	1368	0	■
31	85	75	■

#### MATH – CALCULATOR

Question #	Correct	Your Answer	Difficulty
15	C	A	■
16	B	✓	■
17	D	✓	■
18	B	A	■
19	C	A	■
20	B	✓	■
21	B	C	■
22	D	C	■
23	D	B	■
24	C	○	■
25	B	A	■
26	D	✓	■
27	D	A	■

#### MATH – NO CALCULATOR

Question #	Correct	Your Answer	Difficulty
1	D	✓	■
2	A	✓	■
3	B	✓	■
4	C	B	■
5	C	✓	■
6	B	✓	■
7	A	✓	■

Question #	Correct	Your Answer	Difficulty
8	B	C	■
9	C	✓	■
10	D	✓	■
11	A	C	■
12	C	✓	■
13	B	A	■

Question #	Correct	Your Answer	Difficulty
14	2	0	■
15	90	80	■
16	1	2	■
17	0	✓	■

psat.org/myscore

Go online for your full report

Question-Level Detail

See Subscores

Strengths and Weaknesses

Personalized Practice

\*For schools participating in the test administration study or research group and for Saturday, October 13, administrations, students will see if they answered questions correctly. Actual questions, answers, and answer explanations will not be provided.

© 2018 The College Board. College Board, Advanced Placement Program, AP, SAT, and the acorn logo are registered trademarks of the College Board. AP Potential, BigFuture, and PSAT are trademarks owned by the College Board. PSAT/NMSQT is a registered trademark of the College Board and National Merit Scholarship Corporation. National Merit and the corporate "Lamp of Learning" logo are federally registered service marks of National Merit Scholarship Corporation. All other marks are the property of their respective owners. Visit the College Board on the web: collegeboard.org.  
Khan Academy is a registered trademark in the United States and other jurisdictions.  
01418-062 160042543

