



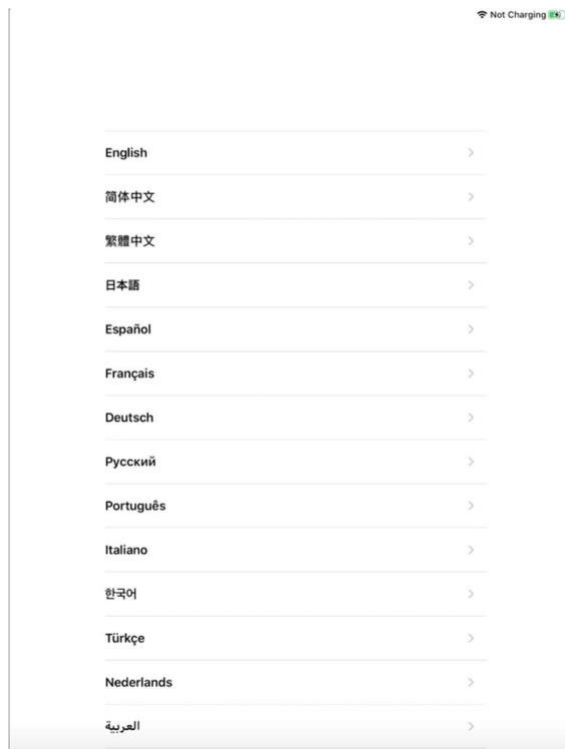
EL PASO  
INDEPENDENT  
SCHOOL DISTRICT

# Setup Guide for iPads

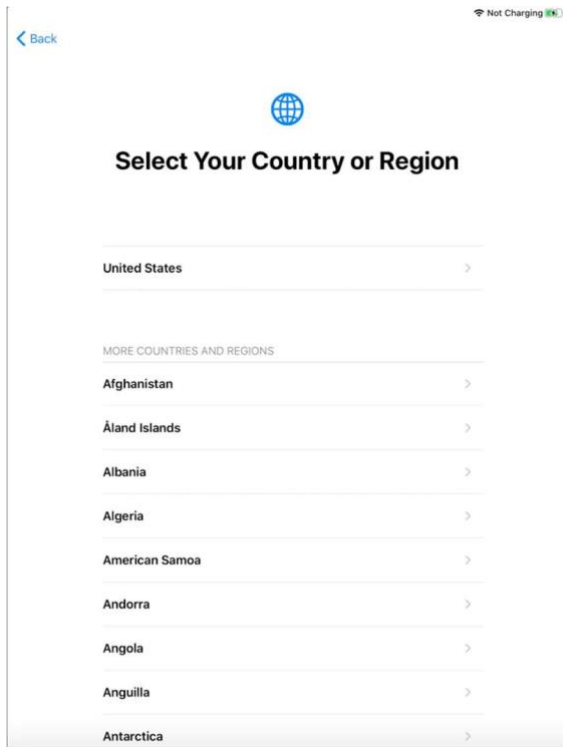
This document will walk you through the setup of your new iPad.

When you first turn on the device please walk through the setup choosing the options listed below.

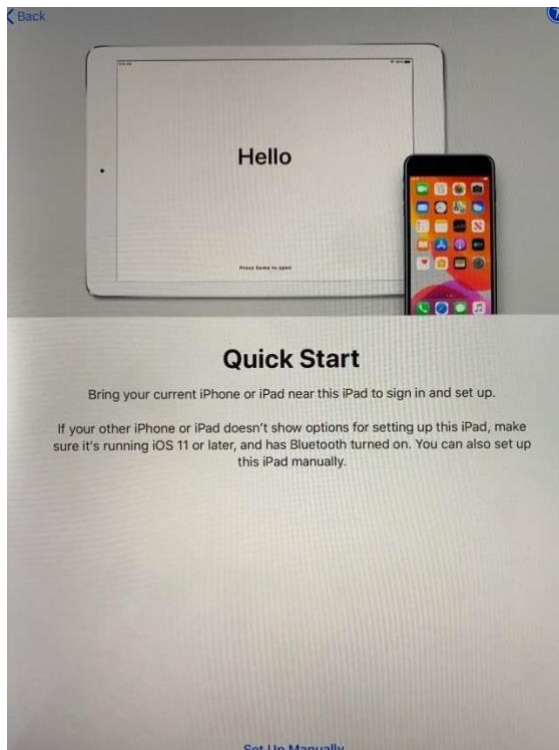
1. Select English.



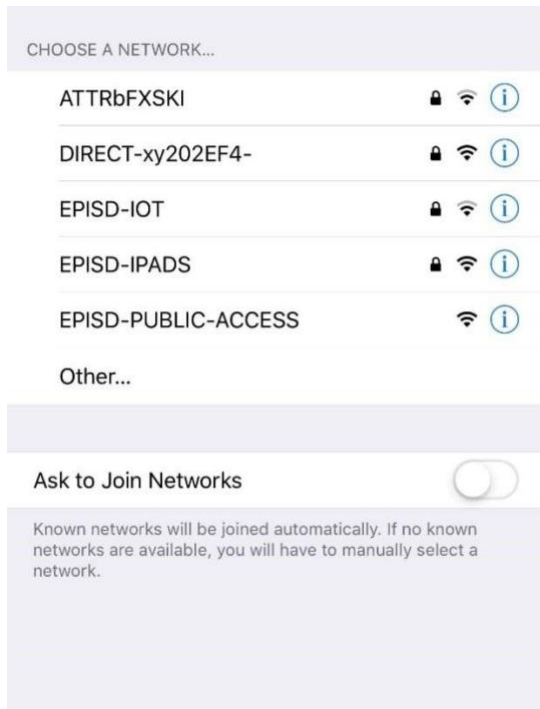
2. Select United States.



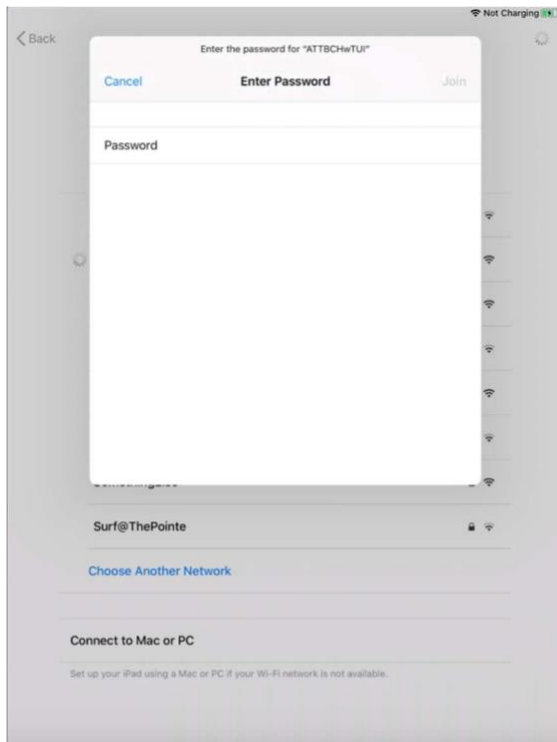
3. If the Quick Start page shows, please select Set Up Manually to continue.



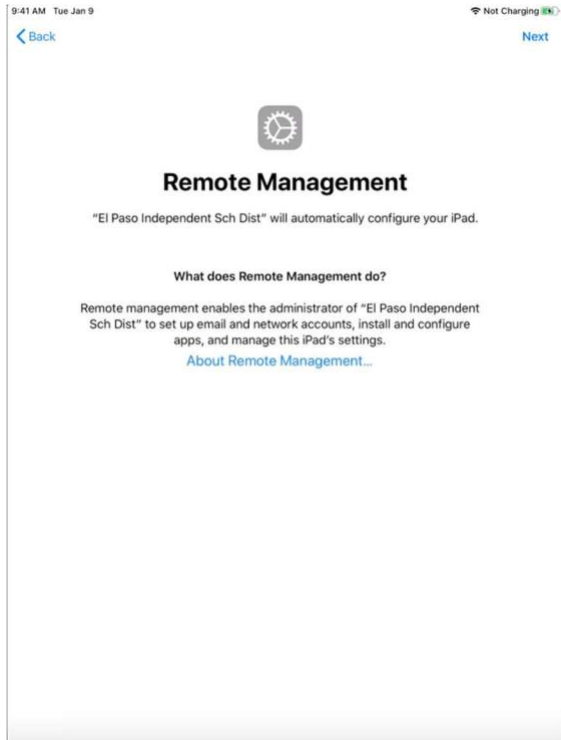
4. If you are setting up this device at your campus, please select EPISD-IPADS and enter the password.



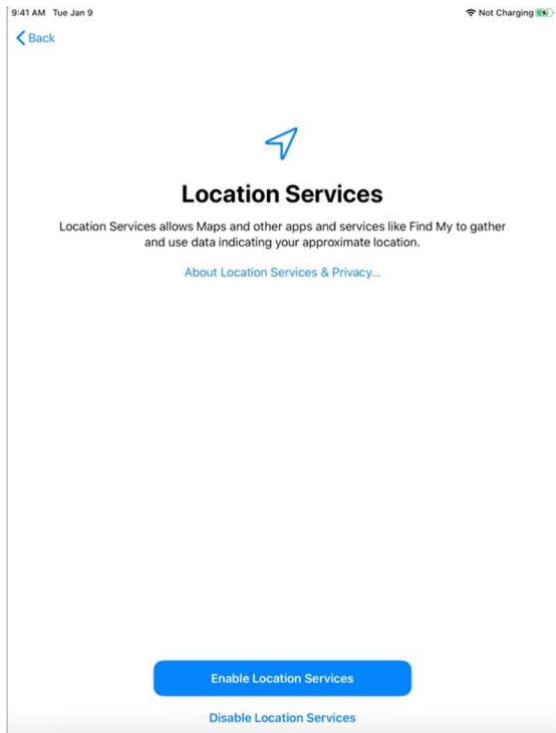
5. If you are setting up this device at home, please select your home Wi-Fi from the list and enter the password to connect.



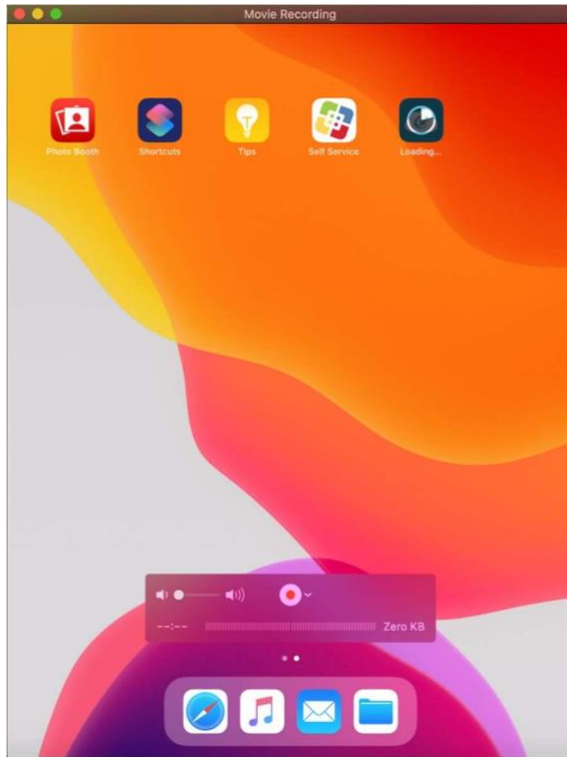
6. It will take a few moments to activate and download the configuration. When the remote Management screen appears, please select Next at the top right of the screen.



## 7. Enable Location Services



## 8. Self Service and Classlink will download and install automatically.



9. To install apps please open up the Self Service application. Select Don't Allow notifications and then continue when asked about analytics.
10. Click install on the application you wish to install. The application will download and install and show up on the desktop when ready.

