

# Coronado's Go To Guide:



## ■ Administrative Team

Marc Escareno, Principal

Email: [meescare@episd.org](mailto:meescare@episd.org)

Robert Stives, G&I Assistant Principal

Email: [rastives@episd.org](mailto:rastives@episd.org)

Ron Dentinger, Assistant Principal, Alpha: A-EI

Email: [rdentin@episd.org](mailto:rdentin@episd.org)

Gilbert Andrews, Assistant Principal, Alpha: En- LI

Email: [gandrews@episd.org](mailto:gandrews@episd.org)

Robert Rivera, Assistant Principal, Alpha: Lo-Ra

Email: [rrivera@episd.org](mailto:rrivera@episd.org)

Clark Edwinson, Assistant Principal, Alpha: Rb-Z

Email: [gcedwins@episd.org](mailto:gcedwins@episd.org)

# General Information/Registration Information



❖ Please Contact any of the following:

Annabelle Baca, Registrar Assistant- [ambaca@episd.org](mailto:ambaca@episd.org)

Emma Diaz, Senior Attendance Clerk- [egdiaz@episd.org](mailto:egdiaz@episd.org)

Salma Isaac, Attendance Clerk- [smisaac@episd.org](mailto:smisaac@episd.org)

Sylvia Holguin, PEIMs Clerk- [sxholgui@episd.org](mailto:sxholgui@episd.org)

Armida Medrano, Registrar- [amedrano@episd.org](mailto:amedrano@episd.org)

Nadine Ortega, Bookroom Clerk- [nortega@episd.org](mailto:nortega@episd.org)

Deanetta White, Secretary to Principal- [ddwhite@episd.org](mailto:ddwhite@episd.org)

**Main phone number: (915) 236 -2000**

Phone calls will only be answered Monday – Friday  
9:00 am – 1:00 pm

# Counselor's Corner

*\*Counselors check their emails and messages daily*

Counselor, A-Car Melissa Fournier, <a href="mailto:mbfourni@episd.org">mbfourni@episd.org</a>	Counselor, Cas-F Dawn Cornell-Stufflebeam, <a href="mailto:dmcornel@episd.org">dmcornel@episd.org</a>
Counselor, G-J Sylvia Marti-Luna, <a href="mailto:sxmarti@episd.org">sxmarti@episd.org</a>	Counselor, K-Mon Jennifer Arias, <a href="mailto:jarias@episd.org">jarias@episd.org</a>
Counselor, Moo-Pen Angelica Ramirez, <a href="mailto:asramire@episd.org">asramire@episd.org</a>	Counselor, Peo-Sar Margarita Arguelles, <a href="mailto:mhernan2@episd.org">mhernan2@episd.org</a>
Counselor, Sas-Z Nora Arenas, <a href="mailto:naarenas@episd.org">naarenas@episd.org</a>	Counselor, College Readiness/Testing Sharon Uribe, <a href="mailto:skuribe@episd.org">skuribe@episd.org</a>
Counselor, Credit by Exam/Dual Credit Lauri Ortiz, <a href="mailto:laortiz@episd.org">laortiz@episd.org</a>	Graduation Coach: Rosella Gomez, <a href="mailto:rgomez3@episd.org">rgomez3@episd.org</a>

# People to Know:

## Nurses:

Carmen Vela, [crvela@episd.org](mailto:crvela@episd.org)

Karla Marquez-Ortiz, [kmmarque@episd.org](mailto:kmmarque@episd.org)

## Testing Coordinators:

Cheryl Capoldi-Hutson, [ccapoldi@episd.org](mailto:ccapoldi@episd.org)

Carlos Maldonado, [jmaldona@episd.org](mailto:jmaldona@episd.org)

## Campus Teaching Coach:

Kasey Pena, [klmoore@episd.org](mailto:klmoore@episd.org)

## Active Learning Leader:

Richard William, [rdwillia@episd.org](mailto:rdwillia@episd.org)

## IB Coordinator:

Les Harris, [lwharris@episd.org](mailto:lwharris@episd.org)

## Special Education Instructional Coach:

Diana DeVore, [cddevore@episd.org](mailto:cddevore@episd.org)

## Diagnostician:

Candice Rivera, [cmbalang@episd.org](mailto:cmbalang@episd.org)

## Diagnostician:

Laura Vargas, [lcvargas@episd.org](mailto:lcvargas@episd.org)

## Business Agent:

Leslie Jones, [lrjones@episd.org](mailto:lrjones@episd.org)

## Student Activities Manager:

Renee Aguirre, [riaguirr@episd.org](mailto:riaguirr@episd.org)

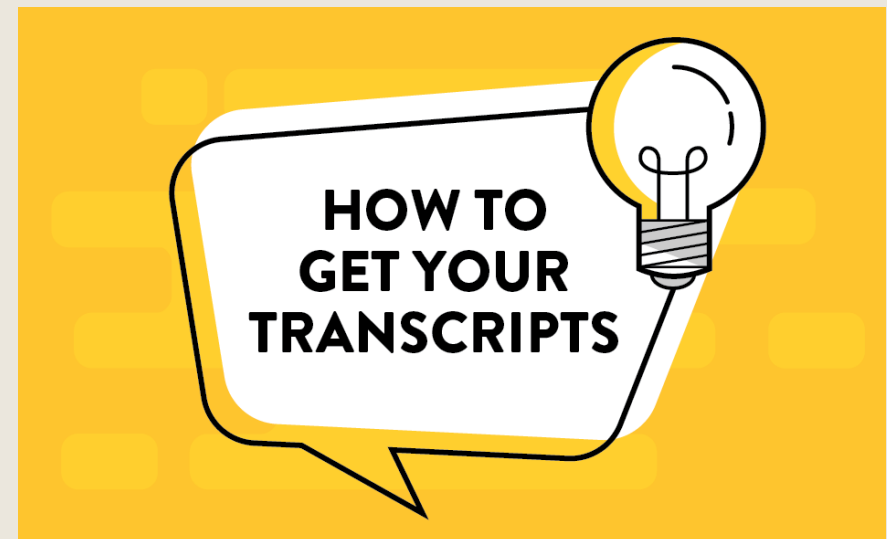
## Athletic Coordinator:

Bob Anderson, [rbanders@episd.org](mailto:rbanders@episd.org)

# Need to Request a Transcript or VOE: (Verification of Enrollment)

- Use this link:

<https://episd.scribborder.com/>



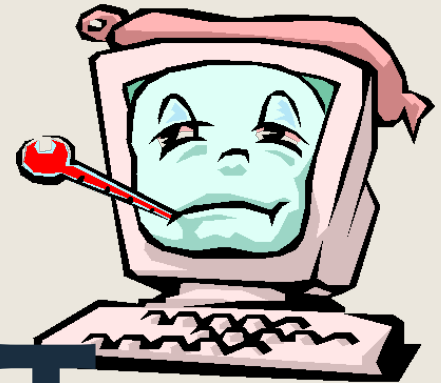
# HAVING LAPTOP ISSUES?

Please fill out Google form using the link below:

[www.tinyurl.com/episdtypechsupport2020](http://www.tinyurl.com/episdtypechsupport2020)

You will need to have the following information:

ID number and 2<sup>nd</sup> period teacher



# NEW STUDENT COMPUTER REQUEST

Please fill out Google form using the link below:

[www.tinyurl.com/newtbirdrequest](http://www.tinyurl.com/newtbirdrequest)

Having trouble please contact: Nadine Ortega at [nortega@episd.org](mailto:nortega@episd.org)