




WELCOME BACK
2021-2022
JEFFERSON/SILVA
H.S.

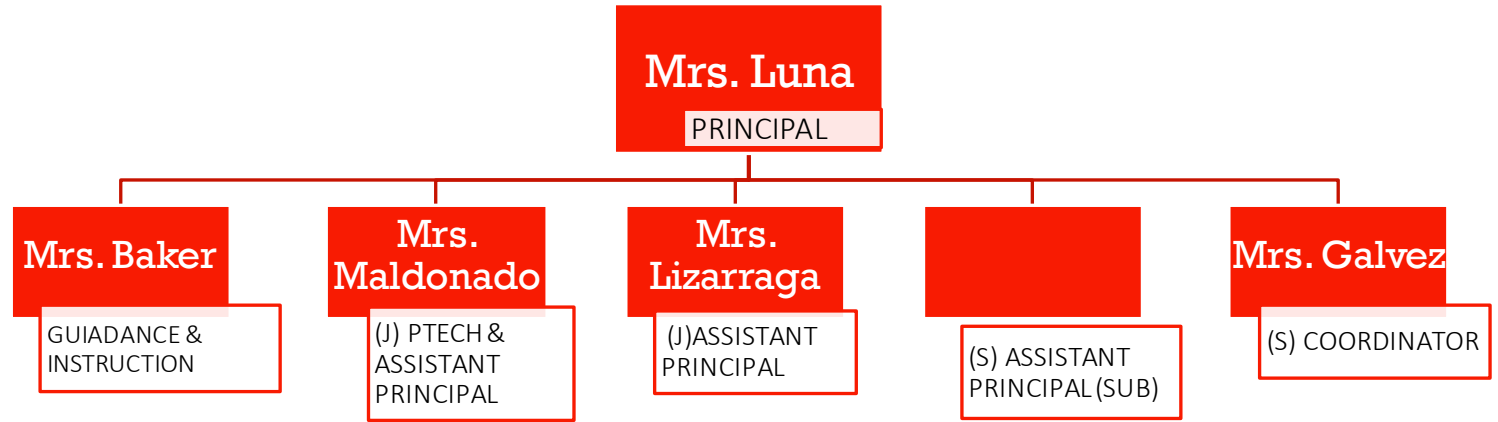
#FoxesUnited:NewBeginnings

The background features several sets of curved lines in the top-left and bottom-right corners. Each set consists of a solid grey line, a dashed grey line, and another solid grey line, all curving towards the center of the page.

STUDENT COUNCIL

- **STUCO President:** Katie Perez
- **Senior Class President:** Shanaya Donaus
- **Junior Class President:** Karina Parra
- **Sophomore Class President:**
- **Freshmen Class President:**

LEADERSHIP TEAM



Campus Teaching Coaches:
 Ezequiel Cruz
 Luis Castaneda
SpEd Coach:
 Claudia Munoz
Student Activities Manager:
 Angelica Lechuga
Lead Counselor:
 Elizabeth Acosta
Athletic Director:
 Tony Martinez

CORE DEPARTMENT	CHAIRS
ENGLISH	ALLISON ZEPEDA
MATH	(J) MARIA LUEVANO (S) DR. TULLIUS
SCIENCE	SAMUEL TELLEZ
SOCIAL STUDIES	(J) AIDE CARDOZA (S) JESSE ARRIETA
CTE	(J) ELIVIRA NAVARRETE
FINE ARTS	SIERRA OAXACA
ELECTIVES	MAJOR LEDAY
SPED	CLAUDIA MUNOZ

INFORMATION

- **School begins 8:45 a.m. NO BELLS (begin & end)**
- **Due to construction/safety NO Student parking**
- **Cafeteria opens at 7:30a.m.**
 - **Breakfast and Lunch is free for all students**

SUPPLIES

Backpacks

District issued laptops

Highlighters

Pens/Pencils

Notebooks

***Teachers will communicate additional supplies for specialized classes.**



COVID

- **CDC and Health Department determine all COVID protocols that EPISD use as a guideline for restrictions in classrooms.**
- **No temperature checks and no requirement for classroom cleaning each period.**
- **If you are running a temperature or feel ill, please stay at home. Your parents need to contact the school to inform attendance that you are out for the day due to illness.**
- **If you are ill on campus, please go to the nurse, Ms. Stanley at Jefferson main building.**
- **Masks are allowed but not required.**

COVID (continued)

- **Students will not have temperature checks upon entering each building.**
- **Bathrooms and water fountains will be functioning at full capacity.**
- **Learning is face-to-face. There is no option for virtual learning and all students are expected to be in class daily, on time.**

ATTENDANCE

- All students are present: remote learning is NOT an option.
- Parents call in student absences to the attendance office.
- If a student is ill and/or has a doctor's appointment, a parent must come into the school to sign the student out. Students may not leave campus on their own without the parent coming to campus.

TARDY POLICY

- Students are expected to be in class on time each period.
- There are no bells, teacher will dismiss on time. Use your watch for time on transition. It is your responsibility not to be late.
- Continual tardiness will result in a parent meeting.

FINAL EXAM EXEMPTIONS

- **Students must have a 90 or above average**
- **Students may not have more than three absences: excused or unexcused.**
- **Students may not have more than three tardies.**
- **School approved absences related to extra-curricular activities do not count against exemptions.**

DRESS CODE STUDENTS

- Teachers will check dress code each period. Students who are not in compliance will be given clothing to change into and/or will call home for clothes. Students will be placed in DAEP until the change is made.
- School appropriate attire that is not revealing:
 - Tops
 - No profanity
 - No sex, drugs, gang messaging
 - No low cut tops: no midriff
 - All shoulder straps need to be 2 inches

DRESS CODE BOTTOMS

- All pants, jeans worn at waist: no revealing underwear
- Ripped jeans are allowed below knee only
- No pajama pants unless allowed for a special event
- Legging may be worn when covered by a shirt or dress to the top of the thigh area.
- No short shorts

DRESS CODE SHOES/HATS

- Shoes must be worn at all times
- No slippers unless allowed for a special event
- No hats of any kind in the building
- Head covers for religious reasons are allowed
- No bandanas are allowed as a hat, belt or hanging from jean pocket
- ****Jefferson Silva administration reserves the right to prohibit other items or dress not specifically listed in the dress code based on the needs of the campus.**

CELL PHONE POLICY

- Cell phones are not allowed in class. Students should put them away during the entire day except for lunch, before and after school.
- Confiscated phones are turned to the business office. They are kept three school nights and may only be picked up by parent with a \$15.00 fee.
- Cellphones will not be used for instruction upon teacher approval.

EPISD Officer Martinez

PARKING & SAFETY

- **DROP OFF & PICK UP**
 - **BUSES**
 - **PARENTS**
- **STUDENT PARKING (pending)**
- **CAMPUS CONSTRUCTION**
- **CROSS WALKS**

GRADING POLICY

POLICY

- Grades shall be uploaded weekly into the gradebook. Two grades per week minimum.
- Four grades shall reflect content mastery through summative assessments.
- Four grades shall reflect content understanding through formative assessments
- Four grades student engagement

GRADING POLICY RE-DO

RE DO:

- Students are allowed to Re-do assignments/tests where a grade of 70% was not earned
- Retakes will be offered once the grade is posted. Remediation is encouraged before the next attempt.
- Students will have five school days from the day an assignment is posted to redo an assignment or retake a test where a 70% was no earned. It is the student's responsibility to communicate with the teacher for a re-do.

GRADING RE-DO (continued)

- After each 9 weeks the window closes. For extenuating circumstances, the Principal shall work with the teacher and student to extend the time allowed to re-do an assignment. An extenuating circumstance is an event that I outside of the student's control.
- An attempt for the assignment has to be made for a re-do to occur.
- Teachers have the right to set clear deadlines for student work and not accept assignments beyond to deadline date.
- Academic dishonestly is not covered within the re-do policy.

GRADUATION
COACH

MRS. E. VALLE

echavez1@episd.org

Office: (915) 236-7433

Fax: (915) 532-2033

Google call/text: (915) 302-0197

Schoology: NBK6-HTTT-KWGC5

Remind code: @esterva

BEHAVIOR

- Be respectful at all times.
- Be kind to your peers.
- Be on time, ready to work in each class.
- No food in class. You may bring bottled water.
- Reach out to you counselor, assistant principal and/or counselor if you need help with instructional or emotional needs.

BEHAVIOR (continued)

- No fighting or bullying.
- No drugs, alcohol, vaping, or cigarettes are allowed on campus.
- You may not consume them before school or off campus at lunch.
- Students in violation will be subject to school discipline processes to include alternative placement, and/or police intervention.
- Possession of THC can result in an arrest and/or felony charge.
- See EPISD Student Code of Conduct

JEFFERSON & SILVA

Ms. Granados (A-F) – (J)

Ms. Resendez (G-M) – (J)

Elizabeth Acosta (N-Z) – (J)

Ms. Romero (College Readiness) – (J)

Ms. Rizo (A-L) –(S)

Ms. Trevino (M-Z) – (S)

COUNSELORS

**SILVA
COORDINATOR**

Denise Galvez

Silva Ambassadors

HOSA

Club 365

EXTRA- CURRICULAR

- Students must be passing to participate in extra-curricular activities.
- Coaches/sponsors determine play time and entries for competition.
- Jefferson Silva has numerous award winning athletic and academic clubs/organizations.

PLEASE JOIN ONE!



Jefferson/Silva High School 2021-22 Bell Schedule

REGULAR DAY		
7:55 – 8:40	45 min	Zero Period
8:40 – 8:45	5 min	Transition
<i>**8:44** WARNING BELL – 1 min</i>		
8:45 – 8:55	10 min	Announcements
8:55 – 10:26	91 min	1st / 5th Period
10:26 – 10:31	5 min	Transition
<i>**10:30** WARNING BELL – 1 min</i>		
10:31 – 12:02	96 min	2nd / 6th Period
12:02 – 12:43	41 min	LUNCH
12:43 – 12:48	5 min	Transition
<i>**12:47** WARNING BELL – 1 min</i>		
12:48 – 2:19	91 min	3rd / 7th Period
2:19 – 2:24	5 min	Transition
<i>**2:23** WARNING BELL – 1 min</i>		
2:24 – 3:55	91 min	4th / 8th Period
4:00 – 4:45	45 min	9th Period

ADVISORY/ASSEMBLY (AM)		
7:55 – 8:40	45 min	Zero Period
8:40 – 8:45	5 min	Transition
<i>**8:44** WARNING BELL – 1 min</i>		
8:45 – 9:15	30 min	1st / 5th Period
9:15 – 10:15	60 min	ADVISORY/ASSEMBLY
10:15- 11:04	49 min	1st / 5th Period
11:04 – 11:09	5 min	Transition
<i>**11:08** WARNING BELL – 1 min</i>		
11:09 – 12:28	79 min	2nd / 6th Period
12:28 – 1:08	40 min	LUNCH
1:08 – 1:13	5 min	Transition
<i>**1:12** WARNING BELL – 1 min</i>		
1:12 – 2:31	79 min	3rd / 7th Period
2:31 – 2:36	5 min	Transition
<i>**2:35** WARNING BELL – 1 min</i>		
2:36 – 3:55	79 min	4th / 8th Period
4:00 – 4:45	45 min	9th Period

DELAYED START		
10:00 – 10:40	Breakfast - Cafeteria Open	
10:40-10:45	5 Min	Transition
<i>**10:44** WARNING BELL – 1 min</i>		
10:45 – 11:49	64 min	1st / 5th Period
11:49 – 11:54	5 min	Transition
<i>**11:53** WARNING BELL – 1 min</i>		
11:54 – 12:58	64 min	2nd / 6th Period
12:58– 1:38	40 min	LUNCH
1:38 – 1:43	5 min	Transition
<i>**1:42** WARNING BELL – 1 min</i>		
1:43 – 2:47	64 min	3rd / 7th Period
2:47– 2:52	5 min	Transition
<i>**2:51** WARNING BELL – 1 min</i>		
2:52 – 3:55	63 min	4th / 8th Period

ADVISORY/ASSEMBLY (PM)		
7:55 – 8:40	45 min	Zero Period
8:40 – 8:45	5 min	Transition
<i>**8:44** WARNING BELL – 1 min</i>		
8:45 – 10:04	79 min	1st / 5th Period
10:04 – 10:09	5 min	Transition
<i>**10:08** WARNING BELL – 1 min</i>		
10:09 – 11:28	79 min	2nd / 6th Period
11:28 – 12:08	40 min	LUNCH
12:08 – 12:13	5 min	Transition
<i>**12:12** WARNING BELL – 1 min</i>		
12:13 – 1:32	79 min	3rd / 7th Period
1:32 – 1:37	5 min	Transition
<i>**1:36** WARNING BELL – 1 min</i>		
1:37 – 2:55	78 min	4th / 8th Period
2:55 – 3:55	60 min	ASSEMBLY
4:00 – 4:45	45 min	9th Period